



IMPLEMENTATION COORDINATING GROUP

Meeting #4
June 27, 2024



AGENDA

30 | Welcome, Introductions and Reports

60 | Round Table Discussion: Aligning
Funding Programs

20 | Discussion: Next Steps

5 | Annual Forum Update

5 | Meeting Feedback

Noon: Gather for Lunch (optional)



MEETING OUTCOMES

- Start to better coordinate and align ourselves with funding opportunities
- Determine next steps to make progress toward our 2024 goal of establishing a framework for funding plans and projects (Task 6.2)



CO-CHAIR WELCOME

INTRODUCTIONS AND UPDATES

ICG Members

- Welcome New Member Luisa Valiela!
- Any alternates in attendance?
- Introductions and Updates



Joint Platform Report



Joint Platform Priority Tasks

(Action 1: Collaborate on a “One Bay” vision to adapt to rising sea levels)

1.2 Lay the foundation for a proactive regional legislative agenda.

(Action 5: Align local and regional plans into a unified adaptation approach)

5.1 Provide incentives for robust, coordinated adaptation plans.

5.2 Align state-mandated planning processes around adaptation.

(Action 6: Figure out how to fund adaptation)

6.2 Establish a framework for funding plans and projects.

6.3 Help cities and counties expand ways to fund adaptation planning and projects.

(Action 8: Fund and facilitate faster adaptation projects)

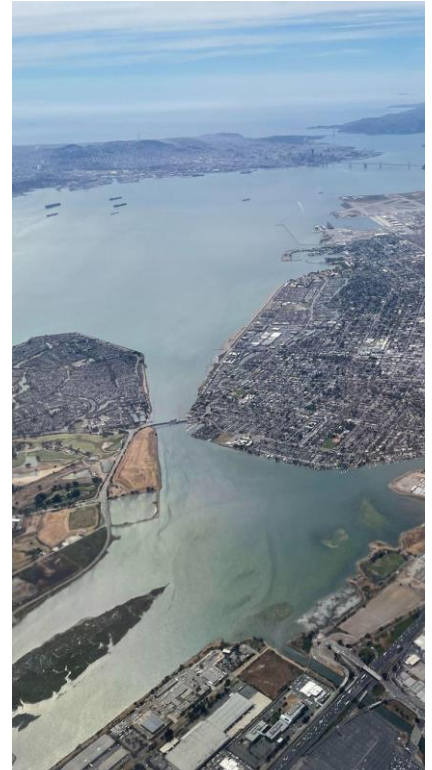
8.1 Incentivize projects that meet regional guidelines.

Task 6.2 Progress

- Save the Bay, Greenbelt Alliance, and others are advocating for the Climate Bond
- Many conversations going - BPC Spring Summit, State of Estuary, BayCAN meeting
- NOAA is seeking to broaden the web of funders to refer projects to other programs
- MOU is finalized and BCDC has adopted
- Federal Section 1122 funding for dredging is available
- WRDA is in process to potentially authorize a region-wide USACE study
- Multiple grant programs currently available (OPC, EPA)

Task 6.2 Challenges

- Too much talk, not enough action
- Fears about CA budget cuts and clawbacks
- Uncertainty about the future of federal funds
- Need to leverage the MOU to build strategic partnerships and better ways of working
- Need to dive into funding projects, not just planning frameworks



Aerial view of the Oakland
Alameda San Leandro
Estuary. Photo by BCDC.

What are some specific challenges to getting funding into people's hands that this group might be able to move the needle on?

- Challenges with different grant program requirements, timelines, grant parameters which lead to lots of extra time and work for applicants
- Network of funders doesn't necessarily communicate or share projects
- Funding priorities may not align with the Bay Area's urgent funding needs
- Funding programs aren't enough! Need to look into new sources of funding, financing
- Can't wait until we've figured out the perfect strategy to get money to plans and projects NOW



Core Functions Outlined in MOU



1. **Fund Management**: *Securing and Awarding Federal, State, and Regional Funding*
1. **Planning**: *Preparing for SLR and Flooding Risks*
1. **Technical Assistance**: *Supporting Project Development and Delivery*
1. **Regulatory Alignment**: *Permitting for Adaptation*
1. **Coordination**: *Collaboration and Decision-making Among Agencies*

At a Glance: Roles and Responsibilities

	ABAG/ SFEP	BAAQMD	BARC	BCDC	Caltrans D4	MTC	SCC	Water Board
Fund Management	Responsible	Involved	Responsible	Involved	Responsible	Responsible	Prime <small>Tracking, Fed \$ default</small>	Involved
Planning	Prime	Involved	Involved	Prime <small>RSAP & Funding Strategy</small>	Involved	Prime <small>PBA Integration</small>	Involved	Involved
Technical Assistance	Responsible	Involved	Prime <small>Facilitate</small>	Prime <small>Planning TA</small>	Responsible	Responsible	Responsible	Involved
Regulatory Alignment	Involved	Responsible	Involved	Responsible	Involved	Involved	Involved	Responsible
Coordination	Involved	Involved	Prime	Responsible	Involved	Involved	Involved	Involved



Prime



Responsible



Involved

Task 6.2 Themes for ICG

1. Directly inform the Investment Strategy identified in the MOU and led by BCDC
2. Advocate at state and federal levels for funding allocations to the Bay that are focused around our specific needs/priorities
3. Help identify what a region-wide TA program could focus on to assist CBOs, cities, and counties in accessing funding and catalyzing financing
4. Hold space for conversations amongst funders about how we can overcome some of the challenges to accessing and delivering funding programs



Other Tasks Progress

- Climate Science Consortium is advancing
- RSAP adaptation planning guidelines are advancing
- Sediment Roadmap is near complete
- White papers, guidance, and knowledge sharing is alive and well
- Any more that people would like to share?

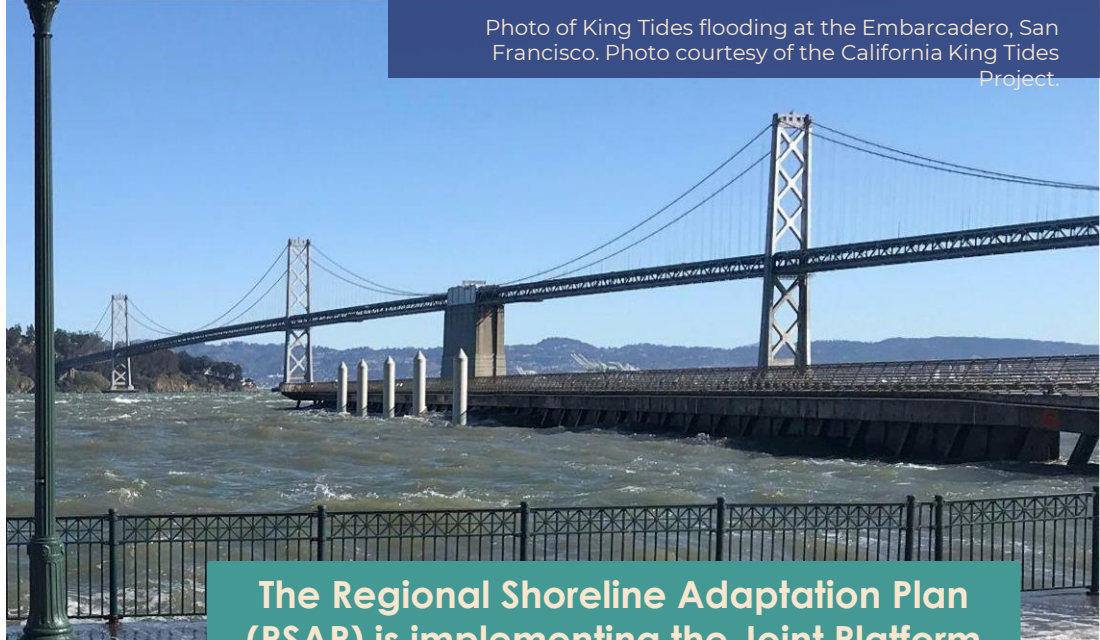
Other Tasks Challenges

- Still logistical challenges with wetlands restoration, implementing projects
- Still misalignment of policies for permitting that are leading to challenges and delays
- Need more on-the-ground projects for communities to get involved with to really get deep community involvement



Aerial view of the Oakland Alameda San Leandro Estuary. Photo by BCDC.

RSAP Guidelines Update

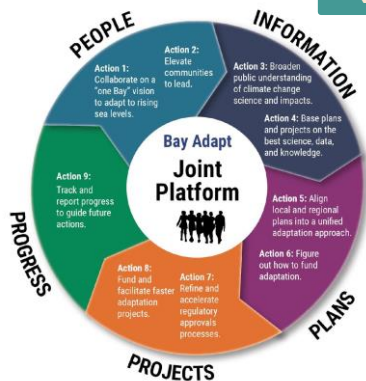


The Regional Shoreline Adaptation Plan (RSAP) is implementing the Joint Platform

BAY ADAPT

REGIONAL STRATEGY FOR A RISING BAY

A regional, **consensus-driven strategy** that lays out the actions necessary to adapt the Bay Area to rising sea level to protect people and the natural and built environment.



An initiative of the San Francisco Bay Conservation and Development Commission.

- *Task 1.1:* Create a long-term regional vision rooted in communities, Bay habitats, and the economy
- *Task 5.1:* Provide incentives for robust, coordinated local adaptation plans.
- *Task 8.1:* Incentivize projects that meet regional guidelines
- *Task 9.1:* Measure regional progress using metrics and share results.

New law for sea level rise adaptation plans (SB 272)

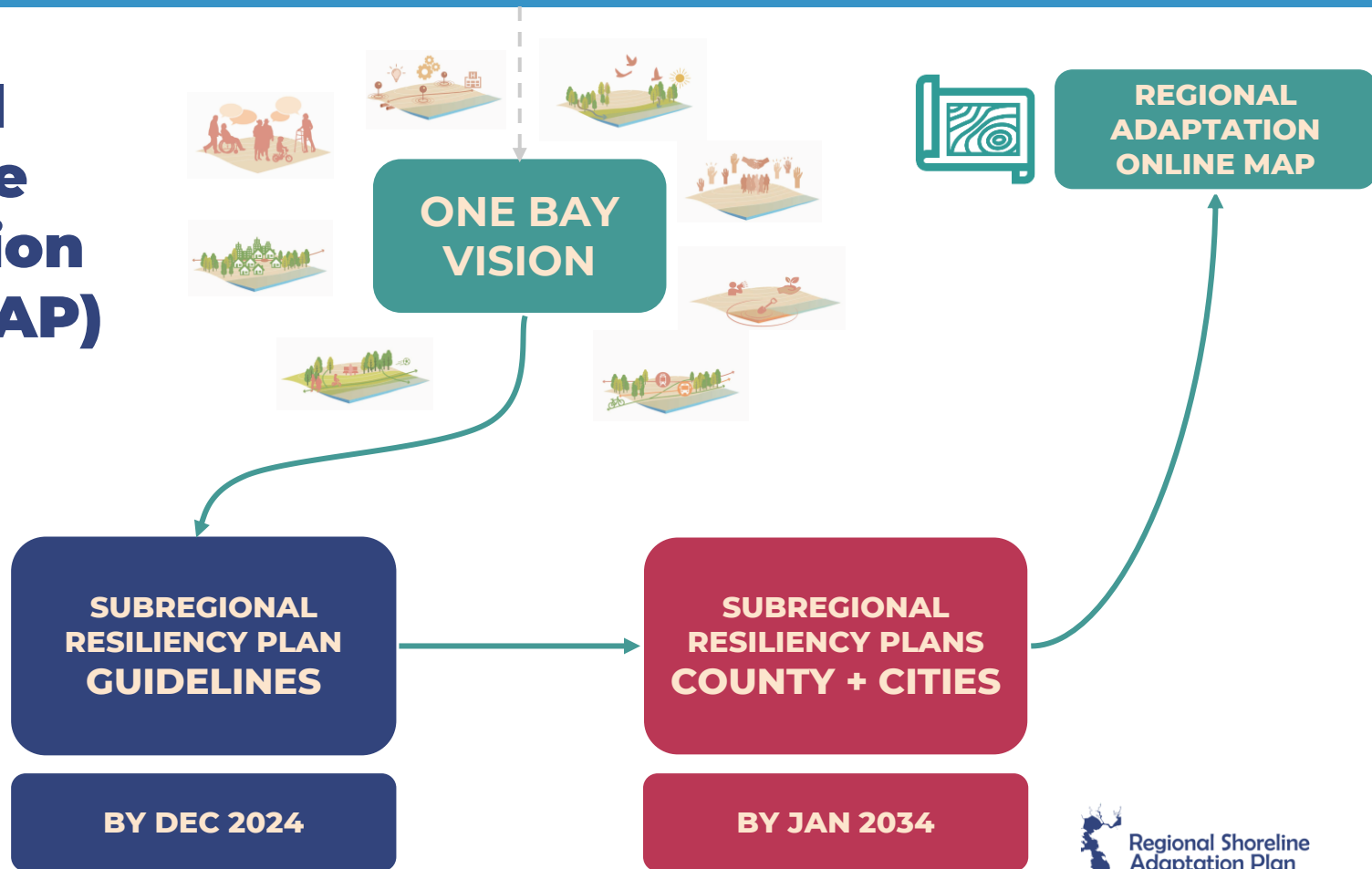
- Requires local jurisdictions to develop “**shoreline resiliency plans**”
- BCDC develops **plan guidelines** and reviews and approves plans
- Directs **State funding** for plan creation and projects in approved plans
- Based on Bay Adapt Guiding Principles

- ✓ **Requires local plans**
- ✓ **Creates guidelines**
- ✓ **Linked to funding**



BAY ADAPT GUIDING PRINCIPLES

Regional Shoreline Adaptation Plan (RSAP)





a. COMMUNITY HEALTH & WELLBEING



b. CRITICAL INFRASTRUCTURE & SERVICES



c. ECOSYSTEM HEALTH & RESILIENCE



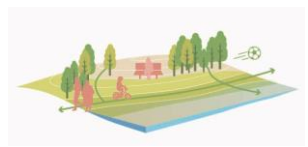
d. GOVERNANCE, COLLABORATION & FINANCE



h. TRANSPORTATION & TRANSIT



g. SHORELINE CONTAMINATION



f. PUBLIC ACCESS & RECREATION



e. HOUSING, DEVELOPMENT & LAND USE

ONE BAY VISION

Read the full version online at www.BayAdapt.org

Subregional Plan Key Concepts

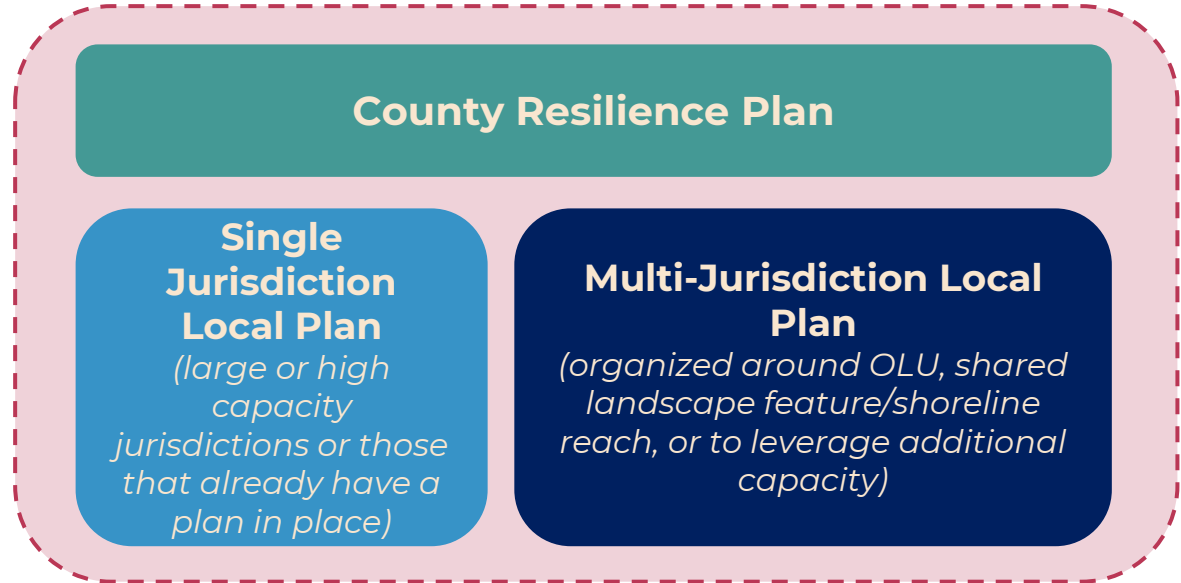
Defining the “Subregional” Plan

County Plan

- Covers unincorporated parts of the county
- Coordinates and organizes local plans

Local Plans

- Jurisdictions may submit **either** a single jurisdiction local plan or partner with their neighbors to submit a multi-jurisdiction local plan



Subregional Shoreline Resiliency Plan

DRAFT Plan Guidelines



The Guidelines describe what needs to be included and submitted in the plan

Element A: Overview of Planning Process

Element B: Existing Conditions

Element C: Vulnerability Assessment

Element D: Adaptation Strategies and Pathways

Element E: Project List

Element F: Land Use Plan and Policies

Element G: Implementation and Finance Plan

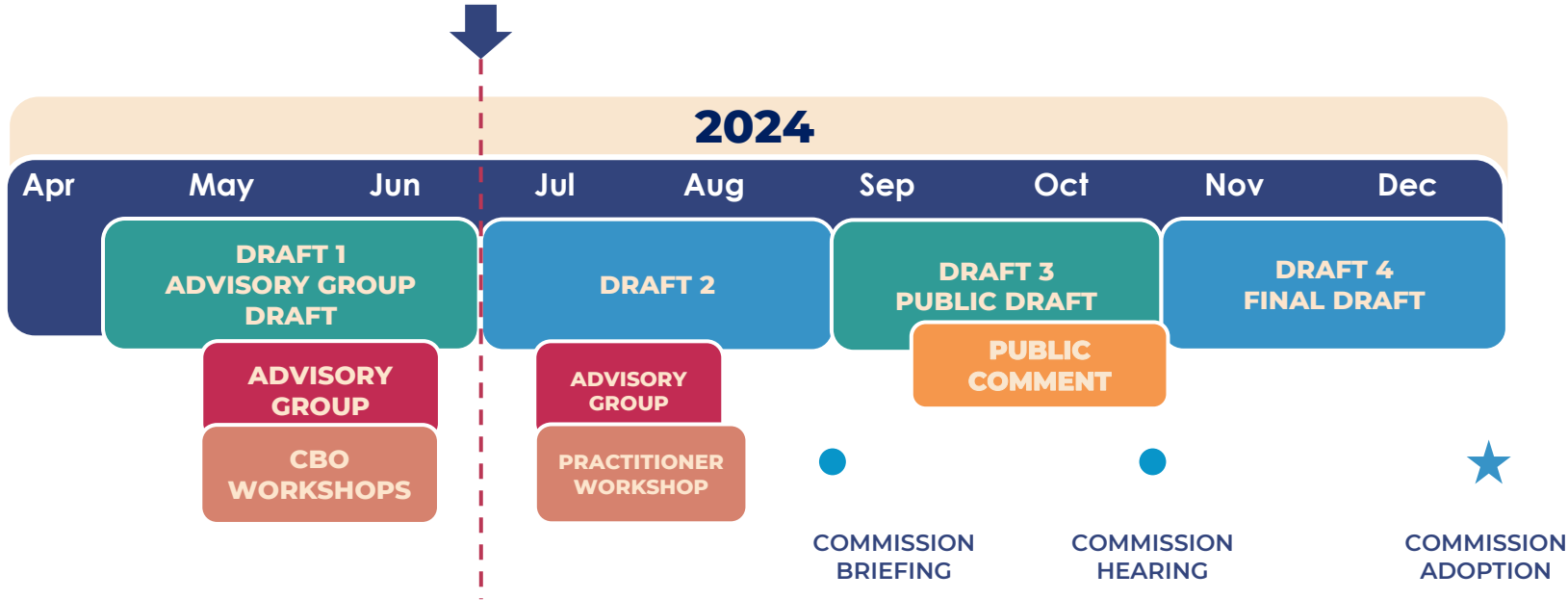
DRAFT Minimum Standards

- Minimum and Recommended Participants
- Equitable Engagement and Participation Standards
- Coastal and Flood Hazard Standards
- Time Horizons and Hazard Scenario Standards
- Minimum Categories and Assets
- Vulnerability Assessment Standards
- Adaptation Evaluation Criteria
- Adaptation Strategy and Pathway Standards

*The Minimum Standards set requirements
for how to meet the Guidelines*



RSAP Timeline



SUBREGIONAL
RESILIENCY PLAN
DEVELOPMENT



Project Priority List Update

Align Funding Programs to Get Plans and Projects Done

Presentations

- Amy Hutzler, California Coastal Conservancy
- Luisa Valiela, US EPA
- Ella McDougall, Ocean Protection Council
- Cameron Oakes, Caltrans

Adaptation Needs

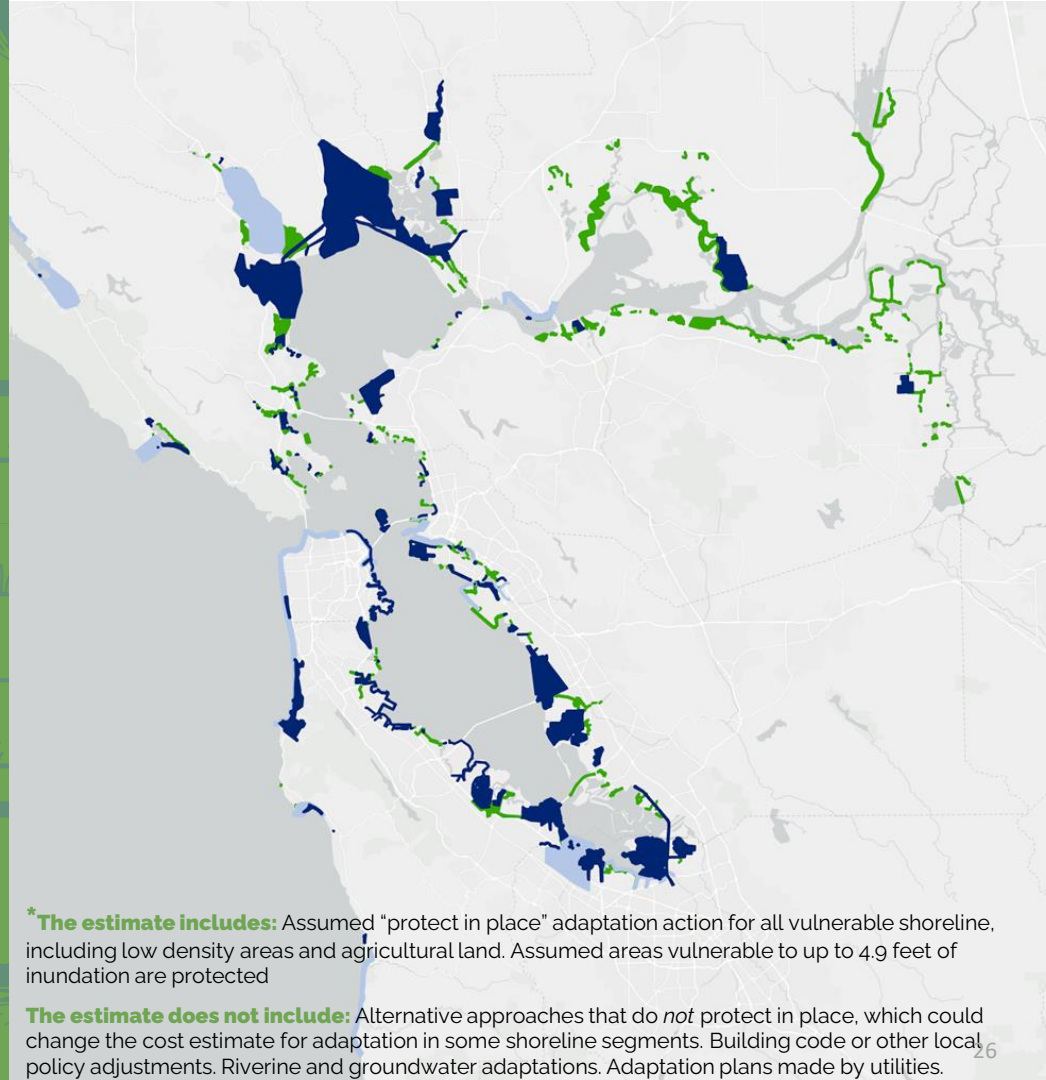
What is the regional estimate to fund adaptation?

\$110 billion*

Estimated cost of sea level rise adaptation through 2050 (in Year of Expenditure dollars)

What is the regional estimate of inaction?

\$231 billion



***The estimate includes:** Assumed "protect in place" adaptation action for all vulnerable shoreline, including low density areas and agricultural land. Assumed areas vulnerable to up to 4.9 feet of inundation are protected

The estimate does not include: Alternative approaches that do *not* protect in place, which could change the cost estimate for adaptation in some shoreline segments. Building code or other local policy adjustments. Riverine and groundwater adaptations. Adaptation plans made by utilities.

Next Steps

Discussion

How can we, as ICG, bring short and long-term coherence and focus to the conversations around funding for SLR in the Bay?

Shall we organize into the proposed subcommittees to advance our work on Task 6.2?

- *Legislation and Advocacy*
- *Project Prioritization*
- *Funding*
- *Education and Outreach*

What actions can we take to progress on 6.2 before our September meeting?

RISING TOGETHER

THE BAY ADAPT SUMMIT



August 8, 2024



Exploratorium at Pier 15

RISING TOGETHER



THE BAY ADAPT SUMMIT



MEETING FEEDBACK



Use link on agenda
or <https://tinyurl.com/bdf5brc4>

2024 MEETINGS CALENDAR

- September 19th, 10am-Noon
- December 19th, 10am-Noon

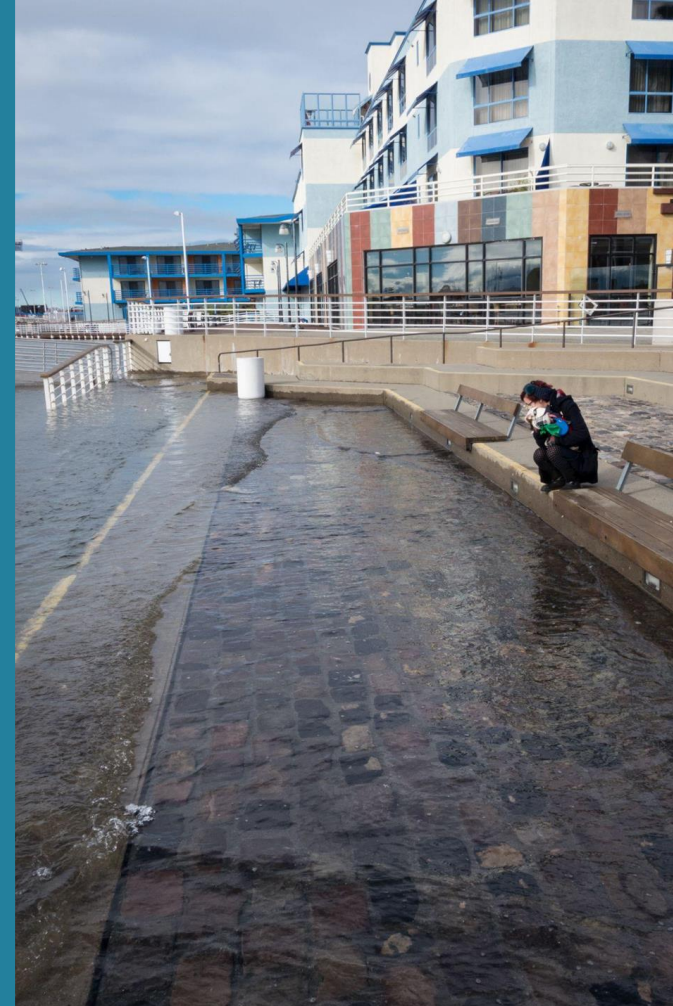


Photo Credit: California King Tides Project. Jack London Square, Oakland

THANK YOU!

Dana Brechwald

Assistant Planning Director for Climate Adaptation
Bay Conservation and Development Commission
Dana.brechwald@bcdca.gov

Matt Biggar

Founder and Principal
Connected to Place
mbiggar@connectedtoplace.com

Zoe Siegel

Senior Director of Climate Resilience
Greenbelt Alliance
zsiegel@greenbelt.org

Jessica Fain

Director of Planning
Bay Conservation and Development Commission
Dana.brechwald@bcdca.gov



Lunch Option:

Soma Eats

121 Spear Street