



Regional Shoreline Adaptation Plan

An implementing project of **BAY ADAPT**

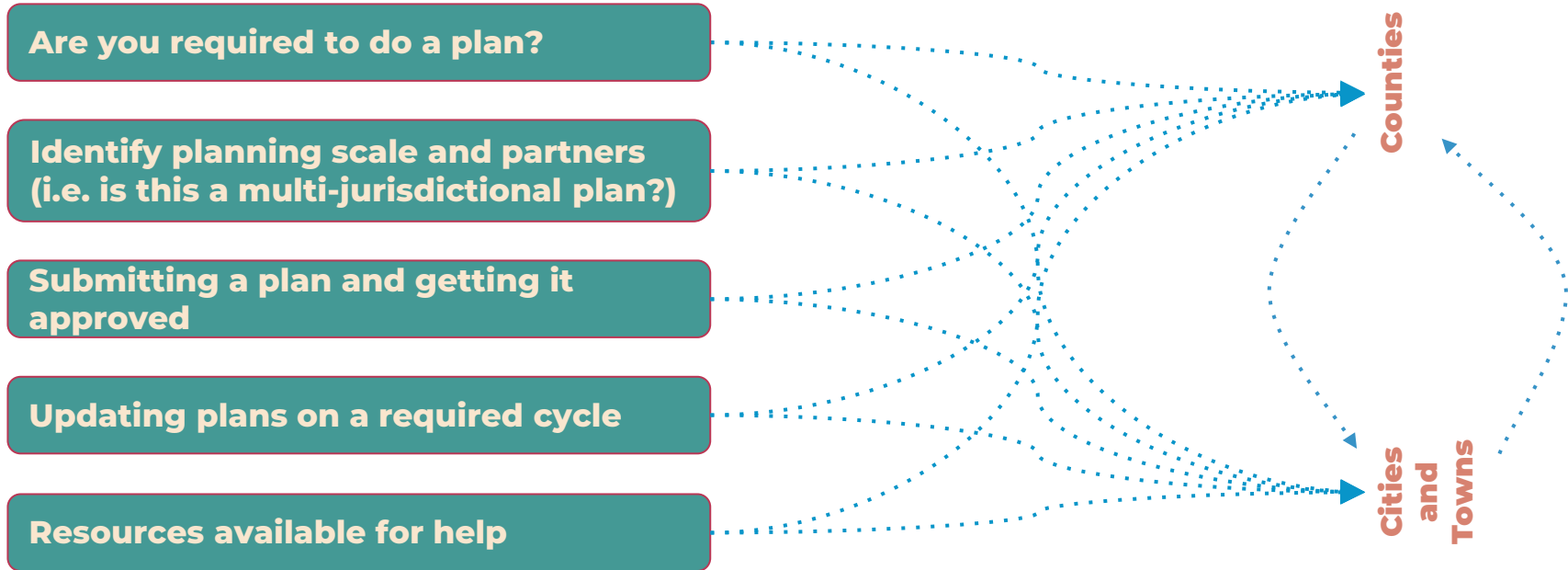
RSAP Planning Practitioner Workshop Session A. Local Planning: Multi-Jurisdictional Planning and Plan Integration

Led By: Dana Brechwald

This session will provide an opportunity to explore and discuss:

1. What are the **roles for local governments** in developing local plans?
2. How does the RSAP ask jurisdictions to think about the **planning process**?
3. How should these plans **integrate with existing local plans**?

What are the roles for local governments in developing local plans?



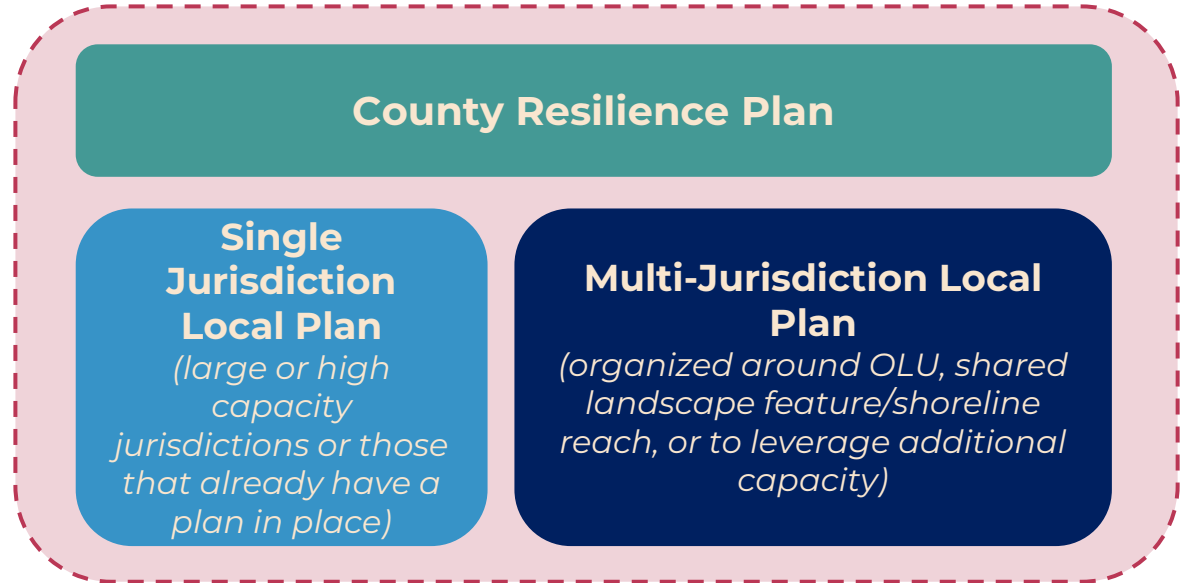
Developing Subregional Shoreline Adaptation Plans

County Plan

- Covers unincorporated parts of the county
- Coordinates and organizes local plans

Local Plans

- Jurisdictions may submit **either** a single jurisdiction local plan or partner with their neighbors to submit a multi-jurisdiction local plan



Subregional Shoreline Resiliency Plan

How does the RSAP ask jurisdictions to think about the planning process?

Plan Guidelines

Element A: Planning Process

Element B: Existing Conditions

Element C: Vulnerability Assessment

Element D: Adaptation Pathways

Element E: Land Use and Policy Plan

Element F: Implementation and Funding Plan

Element G: Project List

**SUBREGIONAL
SHORELINE
ADAPTATION
PLANS**

Minimum Standards

**Coastal Flood Hazards and
Sea Level Rise Scenarios**

**Minimum Categories and
Assets**

Equity Assessment

**Adaptation Strategy
Standards**

Minimum Standards

Equity Assessment				
	Plan Element	Guid e-line	Equity Question	Response
R	Element A: Planning Process	A1-b.	How has the planning effort ensured that representation in the planning project team matches the diversity of the planning area?	
		A1-b.	Has the planning project taken steps to include people from vulnerable groups such as the unhoused, disabled, linguistic communities, LGBTQIAA+, etc?	
		A4-b.	How has the planning project team avoided tokenizing people from vulnerable communities in the planning process?	
		A4-b.	How has the planning effort addressed the needs of multilingual communities in the outreach efforts?	
		A4-b.	How did the planning effort elevate and empower the voices of socially vulnerable and environmental justice communities?	
		A4-b.	How does the engagement plan engage the most vulnerable populations?	
		A4-b.	Are there any communities being left out of this process?	

Element A: Planning Process

- A1. List **local and county plan partners**, including jurisdictions, planning project team members, and affected parties.
- A2. Include a map of the **subregional adaptation planning area** (“planning area”).
- A3. Describe the **multi-jurisdictional coordination** process.
- A4. Summarize **equitable engagement** efforts throughout the planning process.

How should these plans integrate with existing local plans?

- What alignment can you think of with your **existing plans** and ongoing planning processes?
 - Content already developed
 - Incorporating your adaptation plan into other plan updates
 - Aligning plan update timelines
- Please let us know if you have **questions or something is unclear** in the plan responsibilities and process.