



Regional Shoreline Adaptation Plan

An implementing project of **BAY ADAPT**

Planner and Practitioner Workshop

July 23, 2024

An aerial photograph showing a wide river meandering through a vast, flat landscape. The foreground and middle ground are dominated by a large, dark green, marshy area with intricate water channels. To the left, a large, flat, golden-brown field stretches towards the horizon. In the far distance, a range of low mountains is visible under a pale blue sky with light, wispy clouds. The overall scene is a wide, open natural landscape.

A REGION-WIDE CALL TO ACTION..

WELCOME!



Workshop Goals

1. **Introduce** BCDC's Regional Shoreline Adaptation Plan (RSAP) and SB 272
1. **Provide opportunities** for comments, questions, and discussions about the current approach in the RSAP draft
1. **Learn how we can improve** this version to be most actionable and effective for your jurisdictions



AGENDA

Welcome, Workshop Overview and Goals	15 min
Introduction to BCDC, the Regional Shoreline Adaptation Plan (RSAP), and SB 272	15 min
Overview of the RSAP Current Draft	15 min
Thematic Breakouts - Round #1	30 min
<i>Break</i>	
Thematic Breakouts - Round #2	30 min
Supporting Local Implementation - Round #3	30 min
Wrap Up & Next Steps	10 min



Raise **Zoom Hand** to contribute, please hold questions until end of sections



Can **use the chat** to share links to resources, questions, or comments



Please **rename** yourself:

Name (pronouns), Organization



Please **stay muted** when not speaking
(Phone mute is *6)



Remind us **your name** before speaking

If you have tech questions or issues,
please message Kat.

TECHNOLOGY

MEETING AGREEMENTS



UNDERSTAND THE DIFFERENCE BETWEEN INTENT AND IMPACT: Try to understand and acknowledge **your** impact. Denying the impact of something you said by focusing on intent is often more destructive than the initial interaction.



MOVE UP / MOVE BACK: Encourage full participation by all present. Take note of who is speaking and who is not. If you tend to speak often, consider “moving back” and vice versa.



PRACTICE MINDFUL LISTENING: Try to avoid planning what you’ll say as you listen to others. Be willing to be surprised, to learn something new. Listen with your whole self. Be mindful that we all have the potential to nourish and be nourished by the exchange.



SPEAK YOUR TRUTH IN WAYS THAT RESPECT OTHERS: Honor your own life experience by speaking your truth but recognize others may have different truths. Center your experience using “I” statements and trust others to do their own sifting and winnowing.



LEARN TO RESPOND TO OTHERS WITH HONEST, OPEN QUESTIONS: With such questions, we help “hear” each other into deeper speech.



YOU CHOOSE HOW YOU PARTICIPATE: You are invited to join this table in whatever capacity you are able, and to participate in whatever way is true for you.



STAY MINDFUL OF THE BENEFITS OF RECIPROCITY: Try to participate with an understanding that we all have the power to nourish and be nourished by one another.

WHO'S WITH US TODAY?

Who is in the room?

1. How would you describe yourself?
2. What county do you work in?
3. How familiar are you with the RSAP and SB 272?
4. What are you hoping to get out of the workshop today?

menti.com

CODE

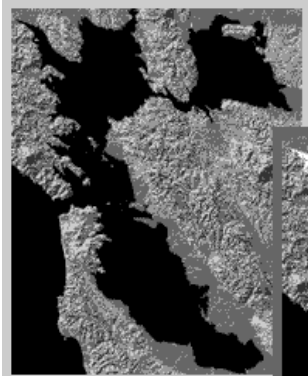
8484 6646



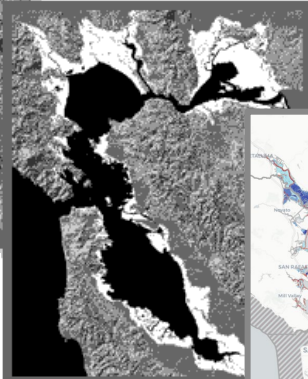
**BCDC, the Regional Shoreline
Adaptation Plan (RSAP), and SB 272**



A look at BCDC's past and future



The Bay in 1849

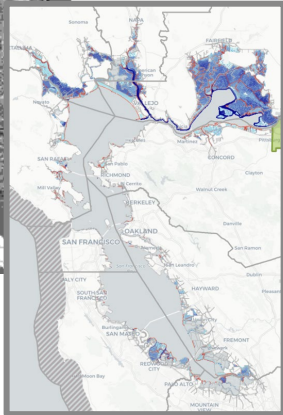


Bay fill in 1965

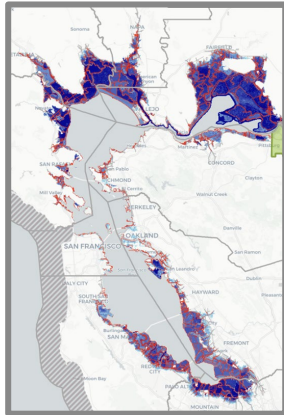


BCDC became the first coastal management agency in the nation in 1965

Sea level rise 1 foot by 2050



Sea level rise 6 feet by...



Top photo is king tides flooding at Redwood Shorelines, bottom photo is the Baylands Preserve. Photos courtesy of the California King Tides project.



What's at risk in 40 years?



5 million daily highway vehicle trips

60,000 daily rail commuters



13,000 existing housing units

104,000 existing jobs

70,000 new, planned housing units

85,000 new, planned jobs



28,000 socially vulnerable residents



20,000 acres of depressional wetlands, lagoon and tidal marsh habitat



Top photo is king tides flooding at the San Francisco Embarcadero, courtesy of the King Tides project. Bottom photo is Bair Island wetlands from Google Pro.

Source: Adapting to Rising Tides Bay Area 2020.



BAY ADAPT

REGIONAL STRATEGY FOR A RISING BAY

A regional, **consensus-driven strategy** that lays out the actions necessary to adapt the Bay Area to rising sea level to protect people and the natural and built environment.

An initiative of the San Francisco
Bay Conservation and
Development Commission.



Photo of King Tides flooding at the Embarcadero, San Francisco. Photo courtesy of the California King Tides Project

Why do we need a Regional Shoreline Adaptation Plan?

- **Coordinated** adaptation
- Priority resources to **frontline communities**
- Long-term **health of wetlands**
- **Strategic** implementation
- Common **standards and methods**
- Pipeline of **funding**
- Track and **measure progress**



**Regional Shoreline
Adaptation Plan**

An implementing project of **BAY ADAPT**



Guiding Principles

- Support socially vulnerable communities
- Put nature first whenever possible
- Solve interconnected problems at the same time
- Practice inclusive, community-led governance and decision making
- Support existing efforts but plan for the long term
- Pick the right strategy for the right time at the right place



Top photo is an outreach event at Richmond. Bottom photo is Bothin Marsh, photo courtesy of the California King Tides project.



What is the Regional Shoreline Adaptation Plan (RSAP)?



A region-wide plan for the Bay shoreline that guides the creation of coordinated, **locally-planned** sea level rise **adaptation actions** that **work together** to meet **regional goals**.



OCEAN
PROTECTION
COUNCIL



New legislation to support sea level rise adaptation (SB 272)

- Statewide legislation passed into law on Oct 7, 2023
- Requires local jurisdictions to develop subregional resiliency plans and for BCDC to develop guidelines for which plans must follow
- Requires BCDC to review - and approve or deny plans - based on consistency with guidelines
- Prioritizes State funding for plan creation and projects in approved plans



- ✓ **Regional Preparation**
- ✓ **Coordination**
- ✓ **Priorities and Funding**

SB 272 Requirements

Minimum Requirements for SLR Resiliency Plans:

- Best available science
- Vulnerability assessment, including at-risk communities
- Adaptation strategies and projects
- Planning and implementation leads
- Timeline for updates
- Economic impact analysis for critical infrastructure

Our work is going above and beyond by creating the guidelines collaboratively and emphasizing equity and nature-based solutions



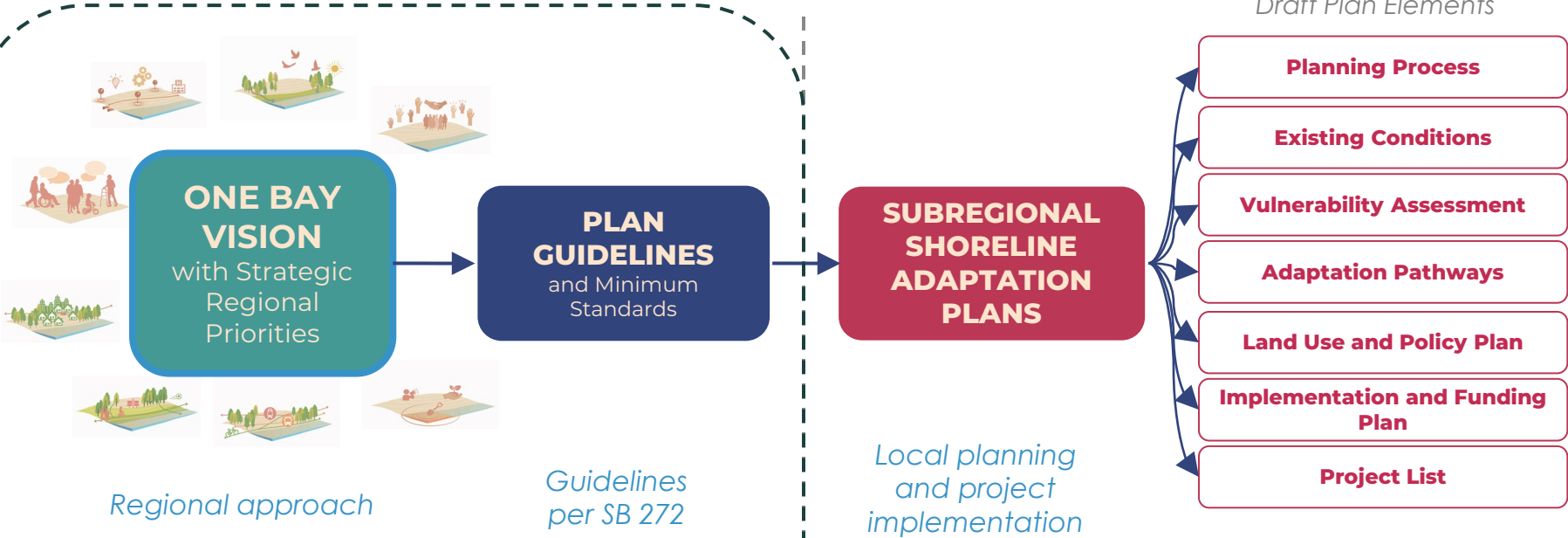
Funding Available

✓ **SB 1 Grant Funding**

Where are we in developing the RSAP?



RSAP Mapping Platform



Regional approach

Guidelines per SB 272

Local planning and project implementation

Draft Plan Elements



GUIDELINES BY DEC 2024



SUBREGIONAL SHORELINE ADAPTATION PLANS BY JAN 2034

Regional Shoreline Adaptation Plan
DRAFT

Orientation to RSAP Draft

1. INTRODUCTION

- Why Adaptation Now?
- RSAP: The Bay's Answer to SLR Adaptation
- Driving Adaptation in the Region and State
- How is this Approach Based in Science?
- The Region's Approach to Adaptation

2. ONE BAY VISION FOR REGIONAL ADAPTATION

- What is the One Bay Vision?
- What are Strategic Regional Priorities
- Community Health and Wellbeing
- Ecosystem Health and Resilience
- Development, Housing, and Land Use
- Critical Infrastructure and Services
- Public Access and Recreation
- Transportation and Transit
- Shoreline Contamination
- Governance, Collaboration and Finance

3. DEVELOPING SUBREGIONAL SHORELINE ADAPTATION PLANS

- Local Government Responsibilities
- Submitting Plans and Getting Approval
- Plan Development Resources

4. PLAN GUIDELINES

- Element A: Planning Process
- Element B: Existing Conditions
- Element C: Vulnerability Assessment
- Element D: Adaptation Pathways
- Element E: Land Use and Policy Plan
- Element F: Project Implementation Plan and Funding Strategy
- Element G: Project List

5. COMPLETE PLAN SUBMITTAL CHECKLIST

6. MINIMUM STANDARDS

- Coastal Flood Hazards and Sea Level Rise Scenarios
- Minimum Categories and Assets
- Equity Assessment
- Adaptation Strategy Standards

7. RESOURCES

8. GLOSSARY



San Francisco Bay Conservation and
Development Commission (BCDC)

Regional Shoreline Adaptation Plan

Version 2. DRAFT
July 10, 2024



Orientation to RSAP Draft

1. INTRODUCTION

- Why Adaptation Now?
- RSAP: The Bay's Answer to SLR Adaptation
- Driving Adaptation in the Region and State
- How is this Approach Based in Science?
- The Region's Approach to Adaptation

2. ONE BAY VISION FOR REGIONAL ADAPTATION

- What is the One Bay Vision?
- What are Strategic Regional Priorities
- Community Health and Wellbeing
- Ecosystem Health and Resilience
- Development, Housing, and Land Use
- Critical Infrastructure and Services
- Public Access and Recreation
- Transportation and Transit
- Shoreline Contamination
- Governance, Collaboration and Finance

3. DEVELOPING SUBREGIONAL SHORELINE ADAPTATION PLANS

- Local Government Responsibilities
- Submitting Plans and Getting Approval
- Plan Development Resources

4. PLAN GUIDELINES

- Element A: Planning Process
- Element B: Existing Conditions
- Element C: Vulnerability Assessment
- Element D: Adaptation Pathways
- Element E: Land Use and Policy Plan
- Element F: Project Implementation Plan and Funding Strategy
- Element G: Project List

5. COMPLETE PLAN SUBMITTAL CHECKLIST

6. MINIMUM STANDARDS

- Coastal Flood Hazards and Sea Level Rise Scenarios
- Minimum Categories and Assets
- Equity Assessment
- Adaptation Strategy Standards

7. RESOURCES

8. GLOSSARY



San Francisco Bay Conservation and Development Commission (BCDC)

Regional Shoreline Adaptation Plan

Version 2. DRAFT
July 10, 2024



Orientation to RSAP Draft

1. INTRODUCTION

- Why Adaptation Now?
- RSAP: The Bay's Answer to SLR Adaptation
- Driving Adaptation in the Region and State
- How is this Approach Based in Science?
- The Region's Approach to Adaptation

2. ONE BAY VISION FOR REGIONAL ADAPTATION

- What is the One Bay Vision?
- What are Strategic Regional Priorities
- Community Health and Wellbeing
- Ecosystem Health and Resilience
- Development, Housing, and Land Use
- Critical Infrastructure and Services
- Public Access and Recreation
- Transportation and Transit
- Shoreline Contamination
- Governance, Collaboration and Finance

3. DEVELOPING SUBREGIONAL SHORELINE ADAPTATION PLANS

- Local Government Responsibilities
- Submitting Plans and Getting Approval
- Plan Development Resources

4. PLAN GUIDELINES

- Element A: Planning Process
- Element B: Existing Conditions
- Element C: Vulnerability Assessment
- Element D: Adaptation Pathways
- Element E: Land Use and Policy Plan
- Element F: Project Implementation Plan and Funding Strategy
- Element G: Project List

5. COMPLETE PLAN SUBMITTAL CHECKLIST

6. MINIMUM STANDARDS

- Coastal Flood Hazards and Sea Level Rise Scenarios
- Minimum Categories and Assets
- Equity Assessment
- Adaptation Strategy Standards

7. RESOURCES

3. GLOSSARY



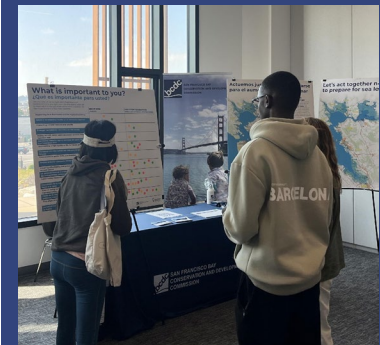
San Francisco Bay Conservation and Development Commission (BCDC)

Regional Shoreline Adaptation Plan

Version 2. DRAFT
July 10, 2024



One Bay Vision – the Foundation for the RSAP



[Read the One Bay Vision here!](#)

Strategic Regional Priorities

Community Health and Wellbeing

Reduced Involuntary Displacement Risk.

Ecosystem Health and Resilience

Complete and Connected Ecosystems.

Development, Housing, and Land Use

Safe and Strategic Shoreline Growth and Density.

Critical Infrastructure and Services

Reliable Critical and Emergency Services.

Public Access and Recreation

Connected Regional Shoreline Access.

Transportation and Transit

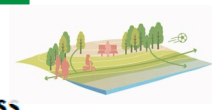
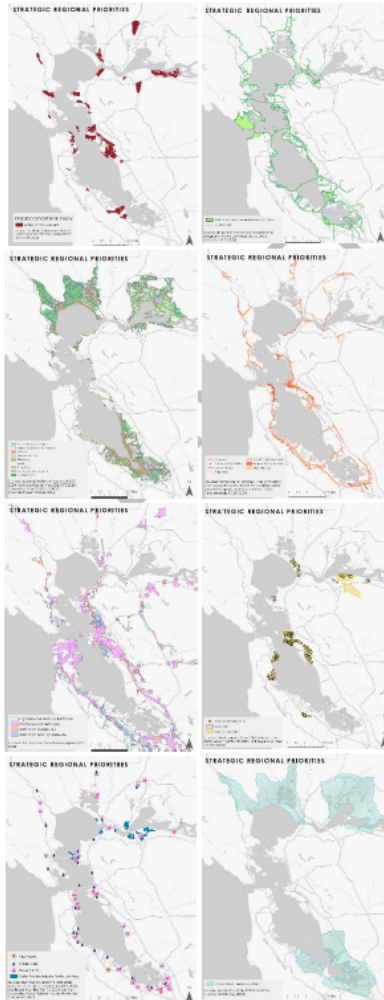
Continued Movement of People and Goods.

Shoreline Contamination

Remediated Contamination for Environmental Justice.

Governance, Collaboration, and Finance

Understand Cross-Bay and Shoreline Hydrological Connectivity.



- Key adaptation strategies identified to reach long-term **regional adaptation goals**.
- Jurisdictions containing one or more Strategic Regional Priority **must incorporate the identified asset into their Subregional Adaptation Plans** (via the guidelines and standards).

Orientation to RSAP Draft

1. INTRODUCTION

- Why Adaptation Now?
- RSAP: The Bay's Answer to SLR Adaptation
- Driving Adaptation in the Region and State
- How is this Approach Based in Science?
- The Region's Approach to Adaptation

2. ONE BAY VISION FOR REGIONAL ADAPTATION

- What is the One Bay Vision?
- What are Strategic Regional Priorities
- Community Health and Wellbeing
- Ecosystem Health and Resilience
- Development, Housing, and Land Use
- Critical Infrastructure and Services
- Public Access and Recreation
- Transportation and Transit
- Shoreline Contamination
- Governance, Collaboration and Finance

3. DEVELOPING SUBREGIONAL SHORELINE ADAPTATION PLANS

- Local Government Responsibilities
- Submitting Plans and Getting Approval
- Plan Development Resources

4. PLAN GUIDELINES

- Element A: Planning Process
- Element B: Existing Conditions
- Element C: Vulnerability Assessment
- Element D: Adaptation Pathways
- Element E: Land Use and Policy Plan
- Element F: Project Implementation Plan and Funding Strategy
- Element G: Project List

5. COMPLETE PLAN SUBMITTAL CHECKLIST

6. MINIMUM STANDARDS

- Coastal Flood Hazards and Sea Level Rise Scenarios
- Minimum Categories and Assets
- Equity Assessment
- Adaptation Strategy Standards

7. RESOURCES

8. GLOSSARY



San Francisco Bay Conservation and
Development Commission (BCDC)

Regional Shoreline Adaptation Plan

Version 2. DRAFT
July 10, 2024



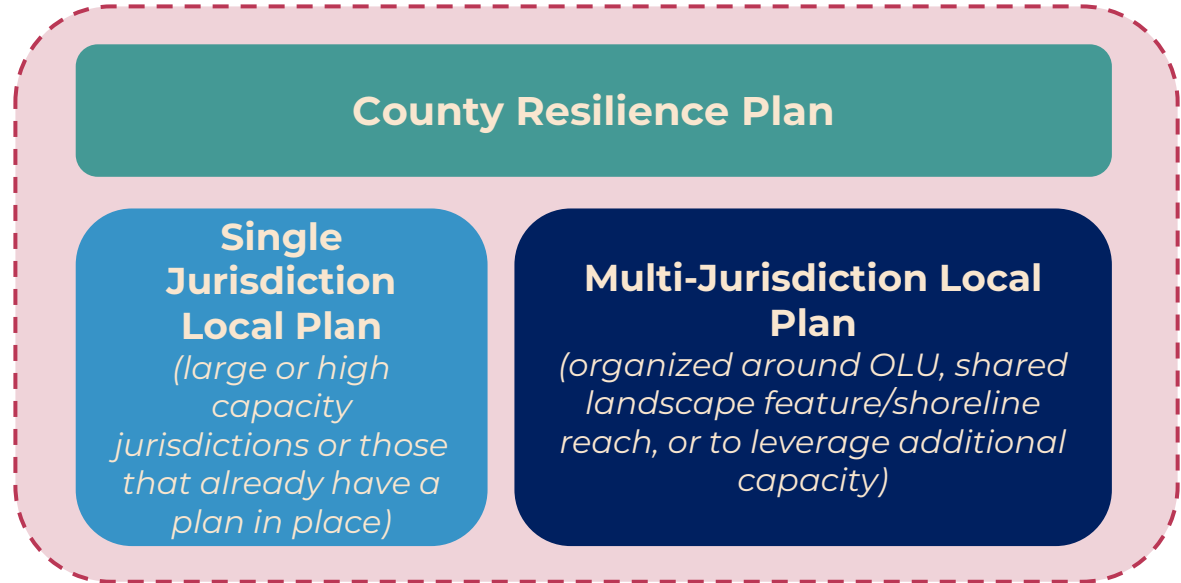
Developing Subregional Shoreline Adaptation Plans

County Plan

- Covers unincorporated parts of the county
- Coordinates and organizes local plans

Local Plans

- Jurisdictions may submit **either** a single jurisdiction local plan or partner with their neighbors to submit a multi-jurisdiction local plan



County Resilience Plan

Single Jurisdiction Local Plan

(large or high capacity jurisdictions or those that already have a plan in place)

Multi-Jurisdiction Local Plan

(organized around OLU, shared landscape feature/shoreline reach, or to leverage additional capacity)

Subregional Shoreline Resiliency Plan

Orientation to RSAP Draft

1. INTRODUCTION

- Why Adaptation Now?
- RSAP: The Bay's Answer to SLR Adaptation
- Driving Adaptation in the Region and State
- How is this Approach Based in Science?
- The Region's Approach to Adaptation

2. ONE BAY VISION FOR REGIONAL ADAPTATION

- What is the One Bay Vision?
- What are Strategic Regional Priorities
- Community Health and Wellbeing
- Ecosystem Health and Resilience
- Development, Housing, and Land Use
- Critical Infrastructure and Services
- Public Access and Recreation
- Transportation and Transit
- Shoreline Contamination
- Governance, Collaboration and Finance

3. DEVELOPING SUBREGIONAL SHORELINE ADAPTATION PLANS

- Local Government Responsibilities
- Submitting Plans and Getting Approval
- Plan Development Resources

4. PLAN GUIDELINES

- Element A: Planning Process
- Element B: Existing Conditions
- Element C: Vulnerability Assessment
- Element D: Adaptation Pathways
- Element E: Land Use and Policy Plan
- Element F: Project Implementation Plan and Funding Strategy
- Element G: Project List

5. COMPLETE PLAN SUBMITTAL CHECKLIST

6. MINIMUM STANDARDS

- Coastal Flood Hazards and Sea Level Rise Scenarios
- Minimum Categories and Assets
- Equity Assessment
- Adaptation Strategy Standards

7. RESOURCES

8. GLOSSARY



San Francisco Bay Conservation and Development Commission (BCDC)

Regional Shoreline Adaptation Plan

Version 2. DRAFT
July 10, 2024



Plan Guidelines and Min. Standards

Guidelines are organized by plan elements

Draft Plan Elements

Element A: Planning Process

Element B: Existing Conditions

Element C: Vulnerability Assessment

Element D: Adaptation Pathways

Element E: Land Use and Policy Plan

Element F: Implementation and Funding Plan

Element G: Project List

Minimum standards are referenced in the Plan Guidelines

Coastal Flood Hazards and Sea Level Rise Scenarios

Minimum Categories and Assets

Equity Assessment

Adaptation Strategy Standards

**SUBREGIONAL
SHORELINE
ADAPTATION
PLANS**

Plan Guidelines and Minimum Standards

SUBREGIONAL
SHORELINE
ADAPTATION
PLANS

Element A: Planning Process

Plan Guidelines Element A: Planning Process	
A1. List local and county plan partners, including jurisdictions, planning project team members, and affected parties.	
R A1-a.	Plan Type. Describe type of plan (county, single jurisdiction, or multi-jurisdictional plan) and describe included jurisdiction(s). <ul style="list-style-type: none">For support on which jurisdictions may be planning partners within a shared <i>Operational Landscape Unit</i>, see the Online Mapping Platform.
R A1-b.	Planning Project Team. Describe who is involved in the planning team, including what areas of government and sectors are represented, how the project team includes diverse viewpoints that can help advance equity in the process and plan results, and the roles of Advisory Groups or key partners to support the project team, where applicable. Participation must include representatives from at least the following areas of expertise: local planning, public works, emergency management, public health, transportation, parks and recreation, and environment and sustainability, where applicable. Use the Equity Assessment to describe efforts towards equitable representation. <ul style="list-style-type: none">For additional guidance on developing your project team, see 7.1.1 Recommended Participants.
R A1-c.	Affected Parties. Describe other affected and interested parties in the plan area, including special districts; asset owners, operators, and managers; major landowners, industries, or businesses; neighborhoods, communities, and/or community groups; and environmental organizations, as applicable. <ul style="list-style-type: none">For additional guidance on who to engage in an adaptation planning process, see 7.1.1 Recommended Participants.
A1-d.	Staffing and Resources. Describe current resources, such as staffing, including roles and departments, budgets, and/or consultant support for sea level rise adaptation and/or flood hazard mitigation. This may include internal and external (public or private) resources.

Guidelines describe what needs to be in the plan.

Each sub-guideline provides details to achieve that guideline and has a submittal requirement attached.

Plan Guidelines and Minimum Standards

SUBREGIONAL
SHORELINE
ADAPTATION
PLANS

Element A: Planning Process

Plan Guidelines Element A: Planning Process	
A1. List local and county plan partners, including jurisdictions, planning project team members, and affected parties.	
R A1-a.	<p>Plan Type. Describe type of plan (county, single jurisdiction, or multi-jurisdictional plan) and describe included jurisdiction(s).</p> <ul style="list-style-type: none"> For support on which jurisdictions may be planning partners within a shared Operational Landscape Unit, see the Online Mapping Platform.
R A1-b.	<p>Planning Project Team. Describe who is involved in the planning team, including what areas of government and sectors are represented, how the project team includes diverse viewpoints that can help advance equity in the process and plan results, and the roles of Advisory Groups or key partners to support the project team, where applicable. Participation must include representatives from at least the following areas of expertise: local planning, public works, emergency management, public health, transportation, parks and recreation, and environment and sustainability, where applicable. Use the Equity Assessment to describe efforts towards equitable representation.</p> <ul style="list-style-type: none"> For additional guidance on developing your project team, see 7.1.1 Recommended Participants.
R A1-c.	<p>Affected Parties. Describe other affected and interested parties in the plan area, including special districts; asset owners, operators, and managers; major landowners, industries, or businesses; neighborhoods, communities, and/or community groups; and environmental organizations, as applicable.</p> <ul style="list-style-type: none"> For additional guidance on who to engage in an adaptation planning process, see 7.1.1 Recommended Participants.
A1-d.	<p>Staffing and Resources. Describe current resources, such as staffing, including roles and departments, budgets, and/or consultant support for sea level rise adaptation and/or flood hazard mitigation. This may include internal and external (public or private) resources.</p>

Min standards direct to requirements for specific data to use to ensure consistency in planning and outcomes that achieve the One Bay Vision

5. Complete Plan Submittal Checklist

Subregional Shoreline Adaptation Plans must be submitted to BCDC for plan review for consistency with the Plan Guidelines by January 1, 2034. Jurisdictions must submit the following checklist as part of their plan submittal.

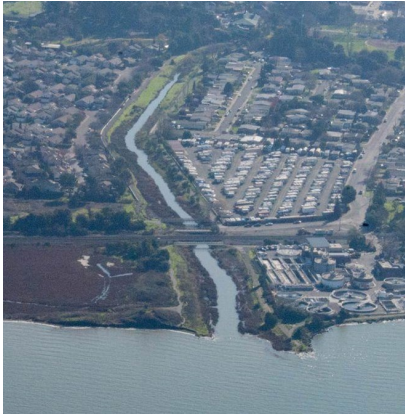
Guideline	Sub-Guideline	Submittal	R	Included	N/A	
Element A: Planning Process						
A1.	A1-a.	Plan Type	Description of plan type and included jurisdiction(s).	R		
	A1-b.	Planning Project Team	List and description of planning team.	R		
	A1-c.	Affected Parties	List of impacted parties.	R		
	A1-d.	Staffing and Resources	Description of current resources available for adaptation planning and implementation.			
A2.	A2-a.	Planning Area	Map with boundaries of plan area.	R		
A3.	A3-a.	Multi-Jurisdictional Coordination	Description of multi-jurisdictional and county coordination.	R		
	A3-b.	State Agency Coordination	Description of regional and state coordination.			
A4.	A4-a.	Vulnerable Community Identification	Definitions and locations of Environmental Justice and socially vulnerable communities.	R		
	A4-b.	Outreach and Engagement	Summary of equitable outreach and engagement efforts, and responses in the Equity Assessment.	R		
	A1-c.	Community Partnerships	Community partnership agreements.			
Element B: Existing Conditions						
B1.	B1-a.	General and Specific Plans	Summary of how coastal flooding hazards are referenced and addressed in general and land use plans.	R		
	B1-b.	Hazard and Emergency Plans	Summary of how coastal flooding hazards are referenced and addressed in hazard and emergency plans.	R		
	B1-c.	Codes and Regulations	Summary of how coastal flooding hazards are referenced and addressed in codes and regulations.	R		
	B1-d.	Climate and Resilience Plans	Summary of how coastal flooding hazards are referenced and addressed in climate and resilience plans.	R		
	B1-e.	Sector and Issue Plans	Summary of how coastal flooding hazards are referenced and addressed in sector and issue area plans.			
	B1-f.	Existing Barriers	Summary of known barriers in existing plans and policies.			

Plan Submittal Checklist

THEMATIC BREAKOUTS - ROUNDS 1 & 2:
Exploring Different Aspects of the RSAP
Project

Breakout Groups - Round 1

Choose 1... 30 minutes in one session. (There will be a second round.)



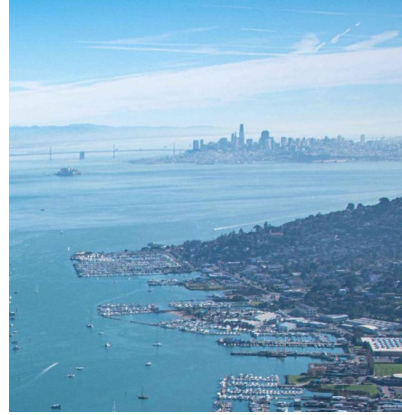
Local Planning: Multi-Jurisdictional Planning and Plan Integration

A



Meaningful Engagement: Equity Assessment and Outreach in Planning

B



Vulnerability Assessment: Flood Hazards and Minimum Assets

C



Adaptation Strategies: Land Use and Adaptation Strategy Standards

D

BREAK

PLEASE RETURN AT 10:40 PM

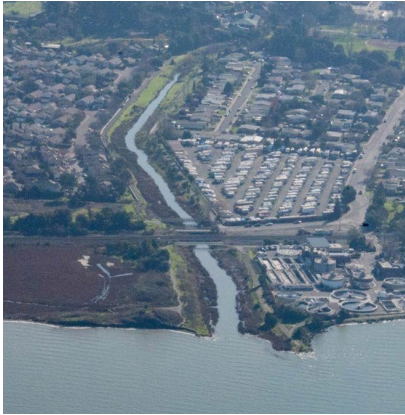


**Bringing
everyone back to
the room!**

**Put your answer
to this visual pun
in the chat.**

Breakout Groups - Round 2

Choose 1... 30 minutes in one session.



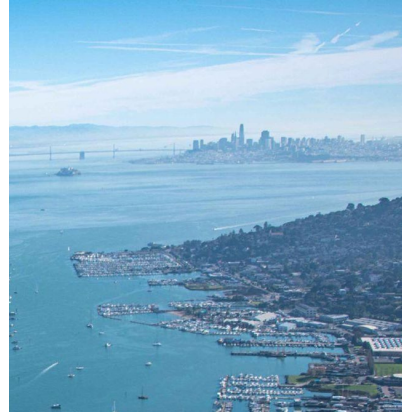
Local Planning: Multi-Jurisdictional Planning and Plan Integration

A



Meaningful Engagement: Equity Assessment and Outreach in Planning

B



Vulnerability Assessment: Flood Hazards and Minimum Assets

C



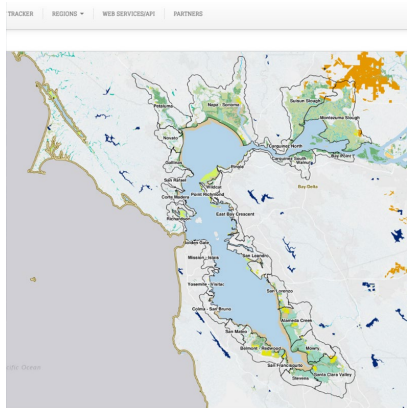
Adaptation Strategies: Land Use and Adaptation Strategy Standards

D

**Questions or Comments from the
Thematic Breakout Groups?**

Breakout Groups - Round 3

Choose 1... 30 minutes in one session.



Mapping Needs:
Developing an RSAP
Mapping Platform

E



Technical and Policy Assistance:
Shaping BCDC's Future
Program

F



Funding Plans and Projects:
Learn about State
Funding Available

G

Wrap Up and Next Steps

What are your closing thoughts?

5. Based on what you've heard, what are you looking forward to or excited about?
6. What are you most concerned about?

menti.com

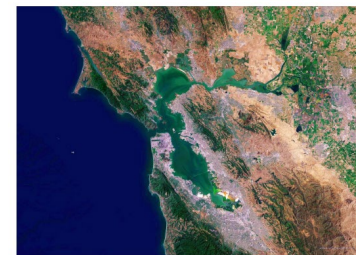
CODE

8484 6646



Next Steps - RSAP Drafts

- **Review period for Draft #2 closes July 24, 2024**
 - Preference for feedback to be received through a comment letter - send to Jackie at Jaclyn.Perrin-Martinez@bcdcc.ca.gov
- **Developing RSAP Draft #3 for Public Comment (Jul-Sep)**
 - Public comment period anticipated for a four-week period from September 23 - October 17, 2024
 - BCDC will provide a response to all comments
- **Final RSAP for BCDC Vote and Possible Adoption (Oct-Nov)**
 - Mailing of the final report anticipated late November for a December 4, 2024 BCDC Commission Vote and possible Adoption



San Francisco Bay Conservation and
Development Commission (BCDC)

Regional Shoreline Adaptation Plan

Version 2. DRAFT
July 10, 2024



RSAP Project Timeline

2024

Feb Mar Apr May Jun Jul Aug Sep Oct Nov Dec



GUIDELINES PHASE

GUIDELINE DEVELOPMENT

CONCEPTUAL PLANS

DRAFT #1

DRAFT #2

DRAFT #3 (PUBLIC COMMENT)

RSAP FINAL

8/15

9/19

10/17

12/5

BCDC BRIEFING

BCDC BRIEFING

BCDC HEARING

BCDC VOTE AND POTENTIAL ADOPTION

Outreach



FOCUS GROUPS



PUBLIC WORKSHOP #2



PLACE-BASED WORKSHOPS



PLANNING PRACTITIONER WORKSHOP



BAY ADAPT: RISING TOGETHER SUMMIT



PUBLIC COMMENT

POSSIBLE PUBLIC WORKSHOP #2



Public comment response

ONLINE MAPPING PLATFORM



Learn more about the **Regional Shoreline Adaptation Plan (RSAP)** at **www.BayAdapt.org**

And sign up for RSAP Email Updates [here](#)

THANK YOU!

Jaclyn Perrin-Martinez
Senior Climate Adaptation Planner
Jaclyn.perrin-martinez@bcdc.ca.gov

